

SAGES

SPATIAL ANALYSIS OF GROWTH, ENVIRONMENT AND SUSTAINABLE WELL-BEING

E-NEWSLETTER



ABOUT THE PROJECT



SAGES approaches an innovative conceptual framework on well-being as an integrative development paradigm (including economic growth, inclusion and sustainability). It enables the identification, modelling and assessment of quantitative and qualitative factors needed to increase the efficiency and effectiveness of public policies to improve the well-being of citizens.

„Conținutul acestui material nu reprezintă în mod obligatoriu poziția oficială a Uniunii Europene sau a Guvernului României”.

„PNRR. Finanțat de Uniunea Europeană - Următoarea Generație UE”

ACTIVITIES IMPLEMENTED

SAGES Special Session

16 May 2025

Special session “Multidisciplinary approaches to well-being. Analyses and impact policies” during the International Conference EURINT2025. The conference was organized by Centre for European Studies, Alexandru Ioan Cuza University of Iasi.



Topics:

- the role of self-affirmation, well-being, and environmental identity;
- the predictive role of subjective economic status, European identity and civic activism;
- well-being through the lens of public policies and legal valences of the concept of well-being;
- circular economy behaviours and resilience in rural and urban communities;
- pathways to enhanced community well-being;
- creative labour market resilience as a driver of well-being in the EU;
- integrating workplace well-being beyond GDP;
- subjective well-being through cultural values orientations



Workshops

Workshop for young researchers

Research career

09 May 2025

Topics approached:

- what does it mean to be a researcher in the socio-humanities compared to the technical field?
- the labor market in research – opportunities and constraints;
- research in Romania vs. European/international research: where we are and where we want to be;
- measures to stimulate research.



Strategic foresight workshop

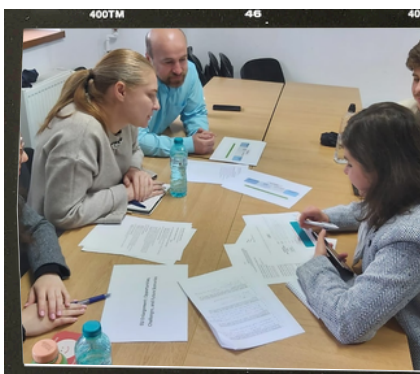
17 May 2025

Trainer: Marina Andeva, Ph.D

University American College Skopje

Topics approached:

- the future of European economic growth in a multipolar world;
- climate resilience and green transition;
- EU enlargement: opportunities, challenges, and future scenarios;
- demographic shifts, migration, and social cohesion;
- European governance, democracy, and political fragmentation.





PROJECT RESEARCH PAPERS

- Batabyal, A. A., Kourtit, K., & Nijkamp, P. (2025). Political competition, fiscal policy, and economic performance in techno-creative places. *World Development*, 188, 106881.
<https://doi.org/10.1016/j.worlddev.2024.106881>
- Ibanescu, B.C., Ursache, I., Bejenaru, I., & Kuliš, Z. (2024). Are collaborative economy platforms an engine for tourism resilience? Evidence from the European Union. *Eastern Journal of European Studies*, 15(2), 211-230.
<https://doi.org/10.47743/ejes-2024-0211>
- Shaban, A., Kourtit, K., & Nijkamp, P. (2024). Reverse causality between urbanization and economic growth: a global test on the validity of urbanization-led economic growth. *The Annals of Regional Science*, 73, 1469–1496.
<https://doi.org/10.1007/s00168-024-01315-9>



**READ
KNOW
GROW**



PROJECT NEXT STEPS

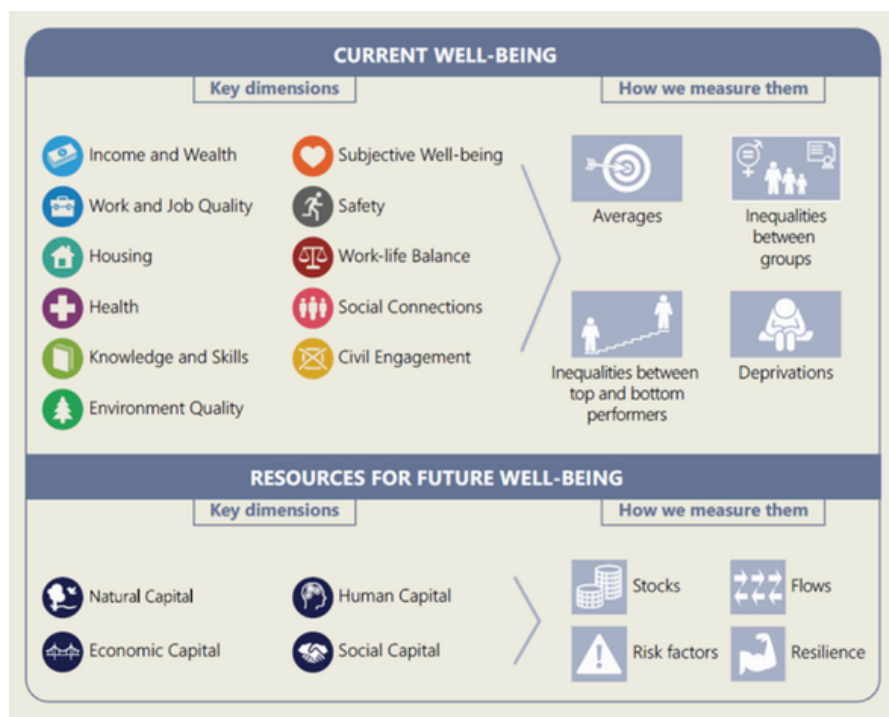
- Scientific reports
- Research dissemination
- Special sessions at international conferences
- Toolkit





DID YOU KNOW...

WELL-BEING FRAMEWORKS



How's life report charts the state of well-being in OECD countries along the key dimensions that matter to people, taking account of both current outcomes and resources for the future.

The Well-being Framework, first launched in 2011, guides the OECD's work to assess whether life as a whole is getting better for people living in OECD countries



Current well-being data focus on living conditions at the individual, household and community levels and describe how people experience their lives "here and now".

Source: OECD (2020[5]) How's Life? 2020: Measuring Well-being, OECD Publishing, Paris, <https://doi.org/10.1787/23089679>.

Editors

Gabriela Carmen Pascariu
Mihaela Clincu
Ramona Țigănașu
Bogdan Ibănescu

Contact us

Centre for European Studies
Alexandru Ioan Cuza University of Iasi, Romania
E-mail: cde@uaic.ro
SAGES project   

Graphics source: Canva



„Conținutul acestui material nu reprezintă în mod obligatoriu poziția oficială a Uniunii Europene sau a Guvernului României”.

„PNRR. Finanțat de Uniunea Europeană - Următoarea Generație UE”

Website - <https://mfe.gov.ro/pnrr/>

Facebook - <https://www.facebook.com/PNRROficial>